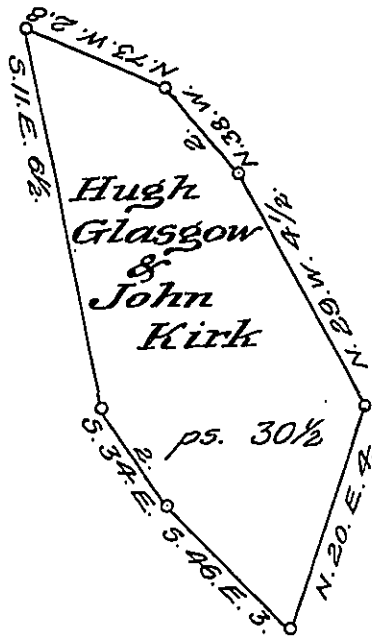


York County Shore



Lancaster County shore.

A Draught of Goose Island situate in the River Susquehanna in Little Britain township Lancaster County about one hundred and twenty perches westward of James Caldwell's Island and opposite to land of John Kirk on the York County Side containing thirty perches and one half Strict Measure surveyed in pursuance of a Warrant dated the 11<sup>th</sup> day of September A.D. 1815 granted to Hugh Glasgow & John Kirk.

p<sup>c</sup>. Jacob Hibshman D.S.

To Jacob Spangler Esq<sup>r</sup> }  
 Surveyor General }

IN TESTIMONY that the above is a copy of the original remaining on file in the Department of Internal Affairs of Pennsylvania, made conformably to an Act of Assembly approved the 16th day of February 1833, I have hereunto set my hand and caused the Seal of said Department to be affixed at Harrisburg, this thirteenth day of December 1907.

*Henry Howard*  
 Secretary of Internal Affairs.